



Impact Block



Features and benefits:

- Rounded edges to cheek plates maintain low rope abrasion when rope is fed 'unfair'
- Upper sheave opens via a threaded locking axle for added security
- Thrust surfaces increase tolerance to external loading of spindle and anchor pin
- Lightweight attachment sling facilitates hauling of block, sling and rope to the climber and helps with handling, in tree stowage and workshop storage
- Direct connection to cordage, the anchor slings helps ensure correct neighbour component compatibility
- 700m or 2300ft wireless range enabling operator to stand at safe distance
- No easily broken external antennae
- High waterproof resistance to IP67/NEMA6 for all weather use
- Massive battery life of 1200 hours operational time
- Handheld display or data logging software options for all applications

The safest choice for the working Arborist.

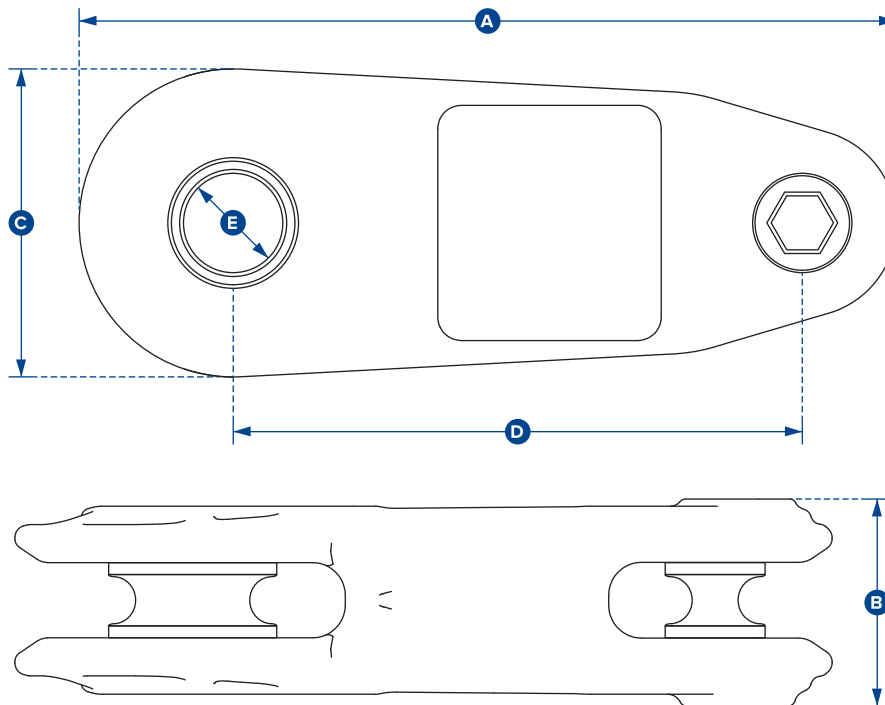
Manufactured in partnership with DMM, the Impact Block has been designed to deliver the best performance in terms of alignment, resistance and appeal.

The aesthetic curves of the Impact Block combines beauty, strength and durability to ensure a rope friendly surface. Coupled with wireless dynamic load monitoring electronics and strain gauge technology from Straightpoint and providing real time data to either handheld controller or logging via our SW-MWLC software to tablet or laptop, it is easy to see why this is one of the most sought after products in the industry.

During development, the Straightpoint Impact Block has gone through a thorough dynamic and static validation testing regime. The end result is a highly functional product with an impressive strength to weight ratio.

Applications:

- Tree care – dismantling ops and speed lines
- Forestry
- Winching operations
- Rescue
- Rigging
- Entertainment industry



| Part Number | WIB6T |
|----------------|--|
| Capacity | 60kN |
| Resolution | 0.1kN |
| Units | kN |
| Weight | 6kg |
| | 13.2lb |
| Safety Factor | 5:1 |
| Battery Type | 4 x AA Alkaline |
| Battery Life | 1,200 hours continuous |
| Operating Temp | -10°C to +50°C / 14°F to 122°F |
| Accuracy | ±0.3% of applied load |
| Frequency | 2.4 GHz |
| System Range | 700 metres / 2300 feet |
| Data Rate | 50Hz - up to 200Hz can be ordered for dynamic load monitoring applications |
| Protection | IP67 / NEMA 6 |
| Max Rope Ø | 20mm |
| | 0.75" |
| Dimension A | 348 |
| | 13.7" |
| Dimension B | 89 |
| | 3.5" |
| Dimension C | 131 |
| | 5.16" |
| Dimension D | 242 |
| | 9.53" |
| Dimension ØE | 27 |
| | 1.06" |