

# 5PT10 / 5PT20



# COMMANDER

SERIES

DLHONLINE

Like a favorite tool in your toolbox, Thern Commander Series portable davit cranes are ideal for many applications. Their sturdy design makes them both affordable and easy-to-use.



Model 5PT10-M1  
Base 5BP10

ISO  
9001:2008  
REGISTERED



Made in the USA

1200 lb and  
2000 lb Capacity  
Portable Davit Cranes

- Portable
- Simple and affordable
- Quick-Mount Winch Bracket
- Roller Bearing for Easy 360° Rotation
- Manual or Power Winch Operation
- Five Corrosion-Resistant Finishes
- Easy, No-Tools Assembly/Disassembly
- Variety of Bases
- 2-Year Warranty

 **THERN**

*LEAVE THE HEAVY LIFTING TO US*

HAND / POWER / HYDRAULIC / AIR WINCHES • DAVIT CRANES

Winona, MN USA | [www.thern.com](http://www.thern.com)

UK Agents [www.dlhone.com](http://www.dlhone.com) 0161 223 1990

# COMMANDER SERIES

## NEW FEATURES

### D-SHAPED SHEAVE CLEVIS PIN

The sheave clevis pin is now D-Shaped to prevent the clevis pin from roating when under light loads.

### QUICK-MOUNT WINCH BRACKET

A variety of Thern winches can be attached to the bracket. After a winch is attached to the bracket, the bracket is easily mounted (without tools) to the crane via quick-connect pins.

### AUXILIARY ATTACHMENT HOLE

Allows for various load attachments or two part line configurations.

### MAST CAP

A cap (not visible) on top of the mast now helps keep weather and debris out of mast.

### ROTATION HANDLE

The new rotation handle position does not interfere with the operation of the boom angle adjustment ratchet jack.

### BASE EXTENSION

The base extension is ideal for use with the flush mount or wall mount base options to maintain crane height for obstacle clearance or when additional 15" height is required.

### BASE CAP

Steel base cap with lanyard, keeps water and debris out when crane is removed.

### ROLLER/BALL BEARING

Optional on the Commander Series Davits, the specially designed roller/ball bearing at top of base requires no tools for installation.

The roller/ball bearing allows smooth and easy 360° crane rotation under load.

### STAINLESS STEEL LOCK

Stainless steel lock assembly keeps crane in position during winch operation and when not in use. Included with roller/ball bearing.

## **COMMANDER** **1000**

SERIES 5PT10  
CAPACITY 1200 LB  
544 KG



**Boom**  
35 lb / 15.9 kg

**Boom Extension**  
23 lb / 10.4 kg



**Bracket**  
2 lb / .9 kg

**Screw-jack**  
11 lb / 4.9 kg

**Rotation Handle**  
7 lb / 3.2 kg

**Mast**  
41 lb / 18.6 kg

**Pedestal Base**  
56 lb / 25.4 kg

**Base Extension**  
33 lb / 14.9 kg  
(5BE10-15)

53 lb / 24.0 kg  
(5BE20-15)

Model Shown  
5PT10-M2  
Base 5BP10

**Bearing**  
9 lb / 4.1 kg



Thern products are not for lifting people or things over people.

# FEATURES AND BENEFITS

## **COMMANDER 2000**

SERIES 5PT20  
CAPACITY 2000 LB  
907 KG



Swaged Ball Fitting



Wire Rope Keeper



Wire Rope Cable Reel



Pedestal



Flush Mount



Wall Mount



Wheel Base

## TRADITIONAL FEATURES

### MANUAL OR POWER OPERATION

Thern davit cranes can be configured with a manual winch for short, infrequent lifts or a power winch for longer lifts or heavier loads. Choose from Thern's spur or worm gear hand winches or power winches with 115/1/60V as well as pneumatic, hydraulic or DC Volt power operation.

### EASY ADJUSTABLE BOOM

Boom extends to four positions with quick-release pin and adjusts angle with ratchet.

### CORROSION RESISTANT FINISH

Electrostatic powder coated crane and stainless steel fasteners combine to resist corrosion in harsh environments. Other options available include: galvanized, stainless steel and epoxy finishes.

### EASY ASSEMBLY/DISASSEMBLY

Quick-release clevis style stainless steel pins allow for easy assembly and quick disassembly for transport or storage. No tools required.

### QUICK DISCONNECT ANCHOR

For quickly attaching or removing wire rope equipped with a swaged ball fitting - Allows the operator to leave the wire rope attached to the load at all times and simply remove the rope from the winch and attach to the optional wire rope keeper or cable reel.

### VARIETY OF BASES

Pedestal, flush and wall mount bases allow for a variety of mounting solutions and are easily installed to a variety of solid surfaces with anchor bolts or other fastening methods. Bases sold separately. Heavy-duty base cap included with lanyard keeps water and debris out of base when crane is removed.

### 2 -YEAR WARRANTY

Industry-leading two-year limited warranty on all our products.

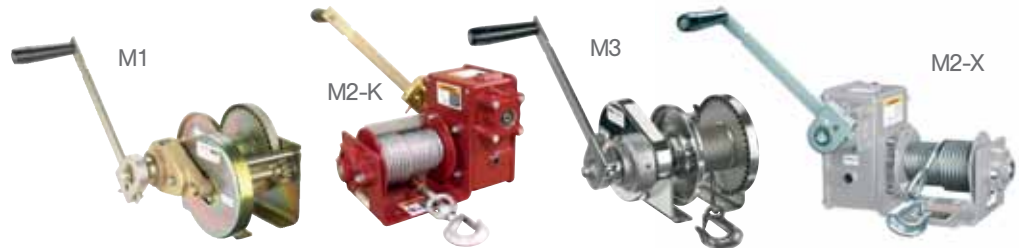


# HAND AND POWER WINCHES

## **COMMANDER** SERIES

### WINCHES

For Commander Series



### Hand Winches

Winch	Winch Model No.	Description	Finish	Approx. Ship Weight
M1	M4312PB-K	Spur gear hand winch with brake	Zinc Plated	28 lbs 12.7 kg
M2	4WM2-K	Worm gear hand winch with brake	Red Enamel	42 lbs 19.1 kg
M3	M4312PBSS-K	Stainless steel spur gear hand winch with brake	Stainless Steel	28 lbs 12.7 kg
M2X	4WM2EGRA-K	Worm gear hand winch with brake	Epoxy Paint (Gray)	42 lbs 19.1 kg

All hand winches include disc brake for load control and steel gear covers to protect gears and help prevent injuries. NOTE: Worm gear requires more turns with less effort than a spur gear winch.



### Electric Winches

Electric Winch	Model No.	Line Speed		Finish	Power	Control (Pendant)	Approx. Ship Weight	
		1st Layer	Full Drum					
E2	4WP2-K	8 fpm	13 fpm	Enamel Paint	115 Volt, AC, Single Phase	6 ft	85 lbs	39 kg
E2X	4WP2EGRA-K	8 fpm	13 fpm	Epoxy Paint	115 Volt, AC, Single Phase	6 ft	85 lbs	39 kg
E4	4777-K	13 fpm	22 fpm	Enamel Paint	115 Volt, AC Single Phase	6 ft	110 lbs	50 kg
E4X	4777EGRA-K	13 fpm	22 fpm	Epoxy Paint	115 Volt, AC Single Phase	6 ft	110 lbs	50 kg
E4DC	4777DC-K	13 fpm	22 fpm	Enamel Paint	12 Volt, DC	10 ft	105 lbs	48 kg
E4DCX	4777DCEGRA-K	13 fpm	22 fpm	Epoxy Paint	12 Volt, DC	10 ft	105 lbs	48 kg

All electric winches mount on boom via quick mount bracket and are equipped with internal break for load control.

# BASES AND WIRE ROPE



## BASES (sold separately) For Commander Series

## SERIES

Select the appropriate base(s) for your application from the chart below. Matching your crane with multiple bases provides optimal worksite flexibility and an economical solution for servicing multiple lift stations.



Finish	Pedestal		Flush		Wall		Wheel		Extension*	
	5PT10	5PT20	5PT10	5PT20	5PT10	5PT20	5PT10	5PT20	5PT10	5PT20
Powder Coat Paint	5BP10	5BP20	5BF10	5BF20	5BW10	5BW20	5BR10	5BR20	5BE10-15	5BE20-15
Galvanized	5BP10G	5BP20G	5BF10G	5BF20G	5BW10G	5BW20G	-	-	5BE10-15G	5BE20-15G
304 Stainless Steel	5BP10S	5BP20S	5BF10S	5BF20S	5BW10S	5BW20S	-	-	5BE10-15S	5BE20-15S
316 Stainless Steel	5BP10S316	5BP20S316	5BF10S316	5BF20S316	5BW10S316	5BW20S316	-	-	5BE10-15S316	5BE20-15S316
Epoxy Paint	5BP10X	5BP20X	5BF10X	5BF20X	5BW10X	5BW20X	-	-	5BE10-15X	5BE20-15X
Approximate Ship Weight	56 lbs (25.4 kg)	71 lbs (32.2 kg)	47 lbs (21.3 kg)	62 lbs (28.1 kg)	52 lbs (23.6 kg)	72 lbs (32.7 kg)	238 lbs (108.0 kg)	351 lbs (159.2 kg)	33 lbs (14.9 kg)	53 lbs (24.0 kg)

\*Ideal for use with flush or wall mount bases to retain crane mast height. (Use with other bases where additional height is needed.)

## WIRE ROPE Assembly (sold separately) For Commander Series



Wire Rope Length	Galvanized Air Craft Cable		304 Stainless Steel Rope		316 Stainless Steel Rope	
	3/16" Dia	1/4" Dia.	3/16" Dia.	1/4" Dia.	3/16" Dia.	1/4" Dia.
20 ft - 6 m	WA19-20NS	WA25-20NS	WS19-20NS	WS25-20NS	WSS19-20NS	WSS25-20NS
28 ft - 8.5 m	WA19-28NS	WA25-28NS	WS19-28NS	WS25-28NS	WSS19-28NS	WSS25-28NS
36 ft - 10.9 m	WA19-36NS	WA25-36NS	WS19-36NS	WS25-36NS	WSS19-36NS	WSS25-36NS
45 ft - 13.7 m	WA19-45NS	WA25-45NS	WS19-45NS	WS25-45NS	WSS19-45NS	WSS25-45NS
60 ft - 18.2 m	WA19-60NS	WA25-60NS	WS19-60NS	WS25-60NS	WSS19-60NS	WSS25-60NS
75 ft - 22.8 m	WA19-75NS	-	WS19-75NS	-	WSS19-75NS	-
90 ft - 27.4 m	WA19-90NS	-	WS19-90NS	-	WSS19-90NS	-

These winches and cranes are sold without wire rope. However, we carry top quality wire rope assemblies optimally designed for use with our winches and cranes. The assemblies above are equipped with a swaged ball fitting and swivel hook (Enamel w/Galvanized rope or Stainless Steel with SS rope)

NOTE: 1/8" 316 wire rope is available with a reduced load rating. Please contact the factory.

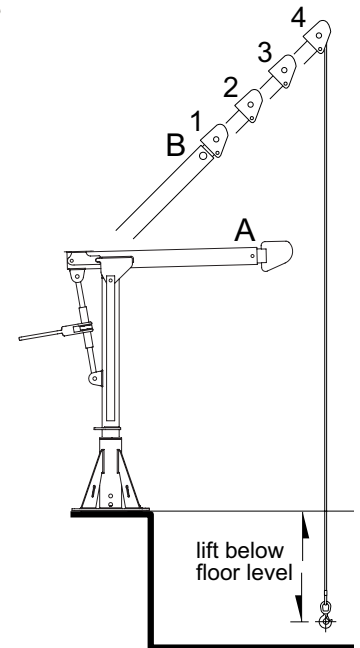
# PERFORMANCE

## COMMANDER 1000

### Commander 1000 Lift Below Floor<sup>2</sup> Level



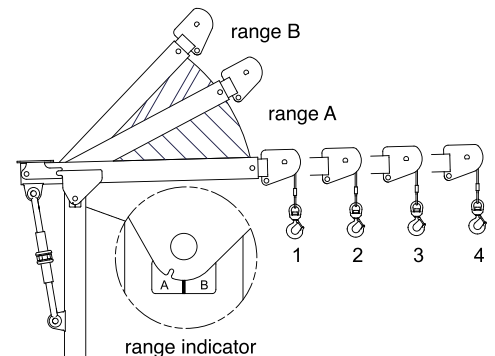
Lift Below <sup>1</sup> Floor				Wire Rope Diameter		Wire Rope Length <sup>3</sup>		Winch Configurations				
Minimum (B4)		Maximum (A1)						M1	M2	M3	E2	E4
(ft)	(m)	(ft)	(m)	(in)	(mm)	(ft)	(m)					
2	0.6	7	2.1	3/16	5	20	6.0	x	-	x	-	x
10	3.0	15	4.5	3/16	5	28	8.5	x	-	x	-	x
18	5.4	23	7.0	3/16	5	36	10.9	x	-	x	-	x
27	8.2	32	9.7	3/16	5	45	13.7	x	-	x	-	x
42	12.8	47	14.3	3/16	5	60	18.2	x	-	x	-	x
57	17.3	62	18.8	3/16	5	75	22.8	x	-	x	-	x
72	21.9	77	23.4	3/16	5	90	27.4	-	-	-	-	x
<hr/>												
2	0.6	7	2.1	1/4	6	20	6.0	x	x	x	x	x
10	3.0	15	4.5	1/4	6	28	8.5	x	x	x	x	x
18	5.4	23	7.0	1/4	6	36	10.9	x	x	x	x	x
27	8.2	32	9.7	1/4	6	45	13.7	x	x	x	x	x
42	12.8	47	14.3	1/4	6	60	18.2	-	x	-	x	x
<hr/>												
2	0.6	7	2.1	5/16	8	20	6.0	x	-	x	-	x
10	3.0	15	4.5	5/16	8	28	8.5	x	-	x	-	x
18	5.4	23	7.0	5/16	8	36	10.9	x	-	x	-	x
27	8.2	32	9.7	5/16	8	45	13.7	-	-	-	-	x



<sup>1</sup> Lift below floor level varies depending on boom position and base configuration. For longer lifts (Up to 350 ft), please contact factory.  
<sup>2</sup> Performance Characteristics are for standard products referred to in this manual. Non-standard products may vary from the original design. Contact Them, Inc. for this information.  
<sup>3</sup> Wire rope assemblies include a hood and a swaged ball fitting to work with quick disconnect anchor on winches and 316SS wire rope is also available. Please contact the factory.

### Commander 1000 Performance Ratings<sup>2</sup>

Boom Position A/B Range	Load Rating		Hook Reach		Hook Height	
	(lb)	(kg)	(in)	(mm)	(in)	(mm)
A-1	1000	453	36	914	42	1066
A-2	800	362	46	1168	42	1066
A-3	650	294	56	1422	42	1066
A-4	550	249	66	1676	42	1066
<hr/>						
B-1	1200	544	22	558	64	1625
B-2	950	430	29	736	71	1803
B-3	750	340	36	914	78	1981
B-4	650	294	43	1092	85	2159



Them products are not for lifting people or things over people.

**IMPORTANT:**

It is the owner or operator's responsibility to determine the suitability of the equipment to its intended use. Study all applicable codes, manuals and regulations. Be sure to read the Owner's Manual supplied with the equipment before operating it.

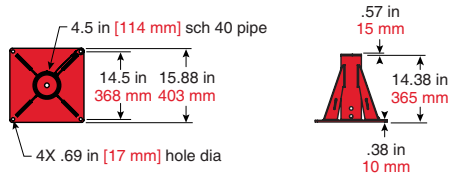
# PERFORMANCE

## **COMMANDER 1000**

### Commander 1000 On Pedestal Base Upright Reach & Height Above Floor

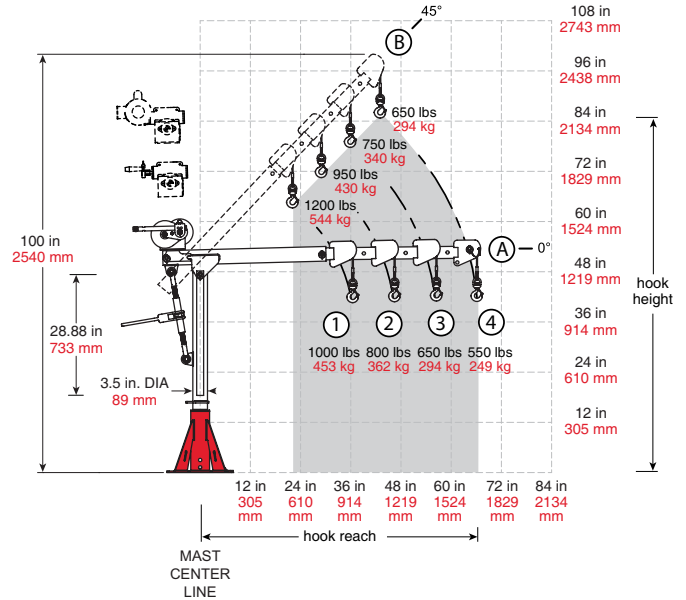
Boom Position	Hook Reach		Hook Height	
	(in)	(mm)	(in)	(mm)
A-1	36	914	42	1066
A-2	46	1168	42	1066
A-3	56	1422	42	1066
A-4	66	1676	42	1066
B-1	22	558	64	1625
B-2	20	736	71	1803
B-3	36	914	78	1981
B-4	43	1092	85	2159

Dimensions are for reference only and subject to change without notice.



### Commander 1000 Pedestal Base 5BP10

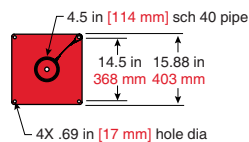
- 5BP10
- 5BP10S
- 5BP10X
- 5BP10G
- 5BP10S316



### Commander 1000 on Flush or Wall-Mount Base Reach & Height Above Floor

Boom Position	Hook Reach		Hook Height	
	(in)	(mm)	(in)	(mm)
A-1	36	914	28	711
A-2	46	1168	28	711
A-3	56	1422	28	711
A-4	66	1676	28	711
B-1	22	558	50	1270
B-2	29	736	57	1447
B-3	36	914	64	1625
B-4	43	1092	71	1803

Dimensions are for reference only and subject to change without notice.

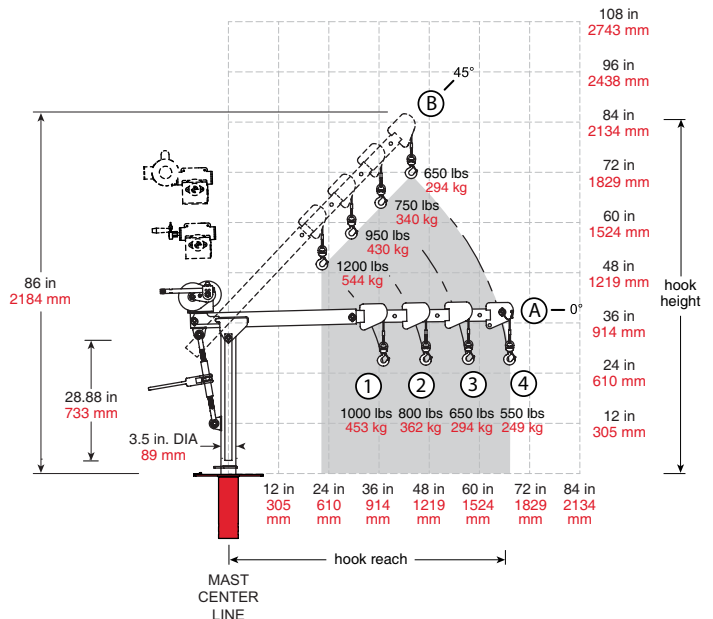
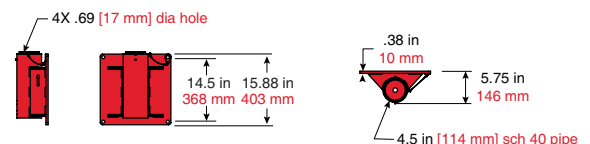


### Commander 1000 Flush Base 5BF10

- 5BF10
- 5BF10G
- 5BF10S
- 5BF10S316
- 5BF10X

### Commander 1000 Wall-Mount Base 5BW10

- 5BW10
- 5BW10G
- 5BW10S
- 5BW10S316
- 5BW10X



#### IMPORTANT:

It is the owner or operator's responsibility to determine the suitability of the equipment to its intended use. Study all applicable codes, manuals and regulations. Be sure to read the Owner's Manual supplied with the equipment before operating it.

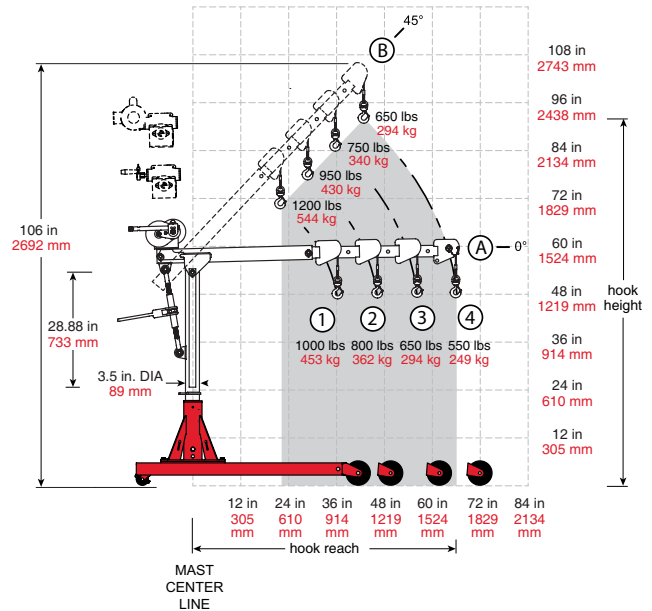
# PERFORMANCE

## Commander 1000 on Wheel Base

# COMMANDER 1000

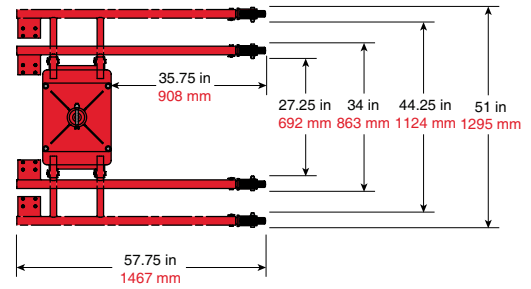


**IMPORTANT:**  
Crane DOES NOT rotate when assembled in 5BR wheel base.



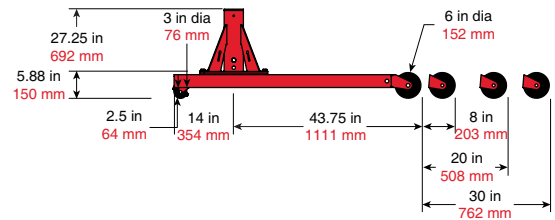
## Commander 1000 Wheel Base Reach & Height Above Floor

Boom Position	Hook Reach		Hook Height	
	(in)	(mm)	(in)	(mm)
A-1	36	914	49	1244
A-2	46	1168	49	1244
A-3	56	1422	49	1244
A-4	66	1676	49	1244
B-1	22	558	71	1803
B-2	29	736	78	1981
B-3	36	914	85	2159
B-4	43	1092	92	2336



## Commander 1000 Wheel Base Load Ratings

Boom Position	Leg Pos 1		Leg Pos 2		Leg Pos 3		Leg Pos 4		
	(lb)	(kg)	(lb)	(kg)	(lb)	(kg)	(lb)	(kg)	
A/B-1	<b>SEE LOAD RATINGS ON CRANE</b>								
A/B-2									
A/B-3									DO NOT USE
A/B-4									DO NOT USE



Dimensions are for reference only and subject to change without notice.

**IMPORTANT:** It is the owner or operator's responsibility to determine the suitability of the equipment to its intended use. Study all applicable codes, manuals and regulations. Be sure to read the Owner's Manual supplied with the equipment before operating it.



# PERFORMANCE



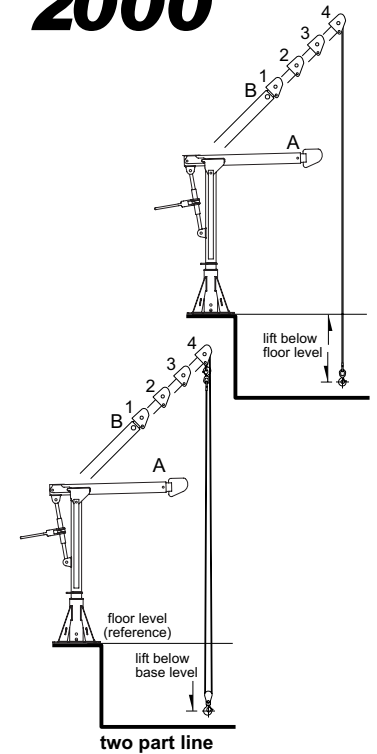
## 2000

### Commander 2000

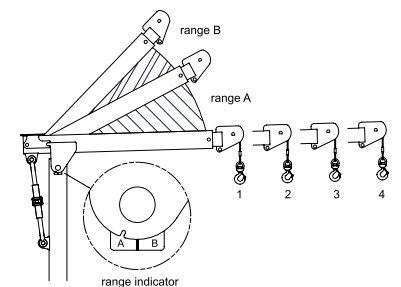
#### 5PT20 Lift Below Floor<sup>2</sup> Level



Lift Below <sup>1</sup> Floor				Wire Rope Diameter		Wire Rope Length <sup>3</sup>		Winch Configurations				
Minimum (B4)		Maximum (A1)						M1	M2	M3	E2	E4
(ft)	(m)	(ft)	(m)	(in)	(mm)	(ft)	(m)					
0	0.0	5	1.5	3/16	5	20	6.0	x	-	x	-	x
8	2.4	13	3.9	3/16	5	28	8.5	x	-	x	-	x
16	4.8	21	6.4	3/16	5	36	10.9	x	-	x	-	x
25	7.6	30	9.1	3/16	5	45	13.7	x	-	x	-	x
40	12.1	45	13.7	3/16	5	60	18.2	x	-	x	-	x
55	16.7	60	18.2	3/16	5	75	22.8	x	-	x	-	x
70	21.3	75	22.8	3/16	5	90	27.4	x	-	x	-	x
<hr/>												
0	0.0	5	1.5	1/4	6	20	6.0	x	x	x	x	x
8	2.4	13	3.9	1/4	6	28	8.5	x	x	x	x	x
16	4.8	21	6.4	1/4	6	36	10.9	x	x	x	x	x
25	7.6	30	9.1	1/4	6	45	13.7	x	x	x	x	x
40	12.1	45	13.7	1/4	6	60	18.2	-	x	-	x	x
<hr/>												
0	0.0	5	1.5	5/16	8	20	6.0	x	-	x	-	x
10	3.0	15	4.5	5/16	8	30	9.1	x	-	x	-	x
16	4.8	21	6.4	5/16	8	36	10.9	x	-	x	-	x
25	7.6	30	9.1	5/16	8	45	13.7	-	-	-	-	x



<sup>1</sup> Lift below floor level varies depending on boom position and base configuration. For longer lifts, please contact factory.  
<sup>2</sup> Performance Characteristics are for standard products referred to in this manual. Non-standard products may vary from the original design. Contact Them, Inc. for this information.  
<sup>3</sup> Wire rope assemblies include a hood and a swaged ball fitting to work with quick disconnect anchor on winches and 316SS wire rope is also available. Please contact the factory.



### Commander 2000

#### 5PT20 Performance Ratings<sup>2</sup>

Boom Position A/B Range	1st Layer Load Rating		Mid-Drum Load Rating		Full Drum Load Rating		Hook Reach		Hook Height	
	(lb)	(kg)	(lb)	(kg)	(lb)	(kg)	(in)	(mm)	(in)	(mm)
	A-1	2000	907	1500	680	1200	544	46	1168	43
A-2	1600	725	1500	680	1200	544	58	1473	43	1092
A-3	1300	589	1300	589	1200	544	70	1778	43	1092
A-4	1100	498	1100	498	1100	498	82	2082	43	1092
<hr/>										
B-1	2000	907	1500	680	1200	544	28	711	71	1803
B-2	1900	861	1500	680	1200	544	36	914	80	2032
B-3	1500	680	1500	680	1200	544	45	1143	88	2235
B-4	1300	589	1300	589	1200	544	53	1346	97	2463

### Commander 2000

#### 5PT20 Ratings<sup>2</sup> with 2-Part Line Kit

Boom Position	1st Layer Load Rating		Mid-Drum Load Rating		Full Drum Load Rating		Hook Reach		Hook Height	
	(lb)	(kg)	(lb)	(kg)	(lb)	(kg)	(in)	(mm)	(in)	(mm)
	A-1	2000	907	2000	907	2000	907	43	1092	31
A-2	1600	725	1600	725	1600	725	55	1397	31	787
A-3	1300	589	1300	589	1300	589	67	1701	31	787
A-4	1100	498	1100	498	1100	498	79	2006	31	787
<hr/>										
B-1	2400	1088	2400	1088	2400	1088	27	685	59	1498
B-2	1900	861	1900	861	1900	861	35	889	68	1727
B-3	1500	680	1500	680	1500	680	44	1117	76	1930
B-4	1300	589	1300	589	1300	589	52	1320	85	2159

Them products are not for lifting people or things over people.

#### IMPORTANT:

It is the owner or operator's responsibility to determine the suitability of the equipment to its intended use. Study all applicable codes, manuals and regulations. Be sure to read the Owner's Manual supplied with the equipment before operating it.

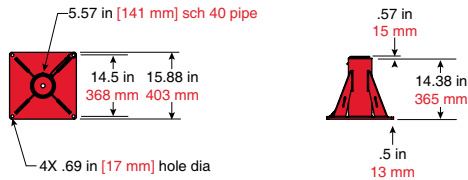
# PERFORMANCE

## COMMANDER 2000

### Commander 2000 On Pedestal Base Upright Reach & Height Above Floor

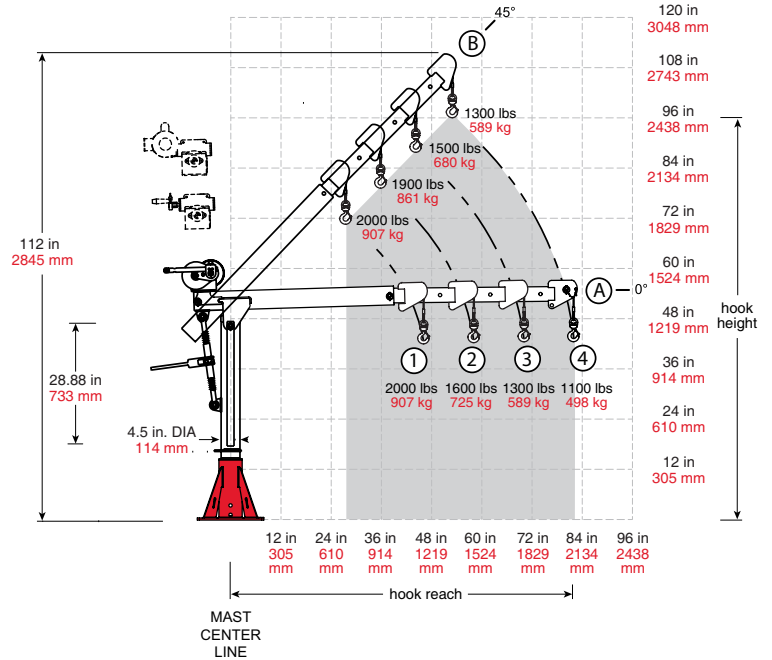
Boom Position	Hook Reach		Hook Height	
	(in)	(mm)	(in)	(mm)
A-1	46	1168	43	1092
A-2	58	1473	43	1092
A-3	70	1778	43	1092
A-4	82	2082	43	1092
B-1	28	711	71	1803
B-2	36	914	80	2032
B-3	45	1143	88	2235
B-4	53	1346	97	2463

Dimensions are for reference only and subject to change without notice.



### Commander 2000 Pedestal Base 5BP20

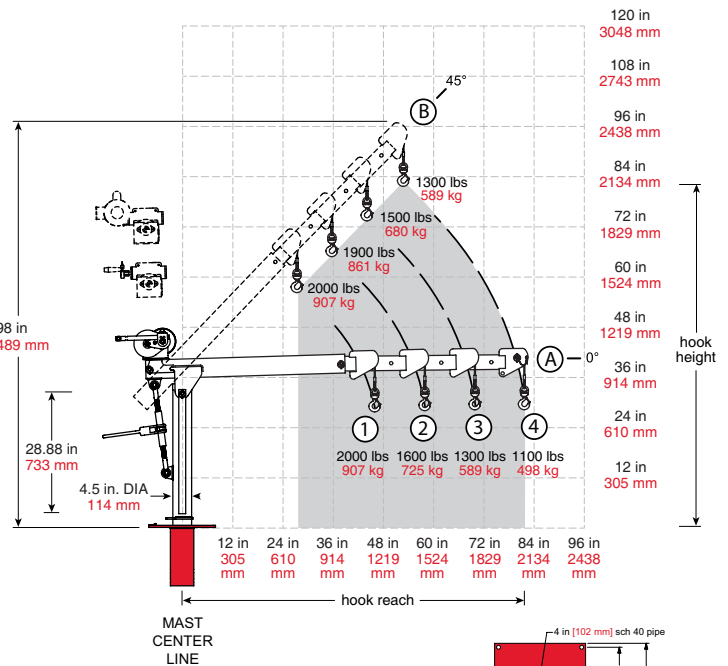
- 5BP20                      5BP20S                      5BP20EGRA
- 5BP20G                    5BP20S316



### Commander 2000 on Flush or Wall-Mount Base Reach & Height Above Floor

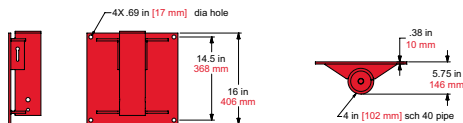
Boom Position	Hook Reach		Hook Height	
	(in)	(mm)	(in)	(mm)
A-1	46	1168	29	736
A-2	58	1473	29	736
A-3	70	1778	29	736
A-4	82	2082	29	736
B-1	28	711	57	1447
B-2	36	914	66	1676
B-3	45	1143	74	1879
B-4	53	1346	83	2108

Dimensions are for reference only and subject to change without notice.



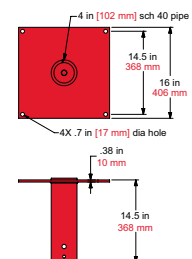
### Commander 2000 Wall-Mount Base 5BW20

- 5BW20
- 5BW20G
- 5BW20S
- 5BW20S316
- 5BW20EGRA



### Commander 2000 Flush Base 5BP20

- 5BF20
- 5BF20G
- 5BF20S
- 5BF20S316
- 5BF20EGRA



### IMPORTANT:

It is the owner or operator's responsibility to determine the suitability of the equipment to its intended use. Study all applicable codes, manuals and regulations. Be sure to read the Owner's Manual supplied with the equipment before operating it.

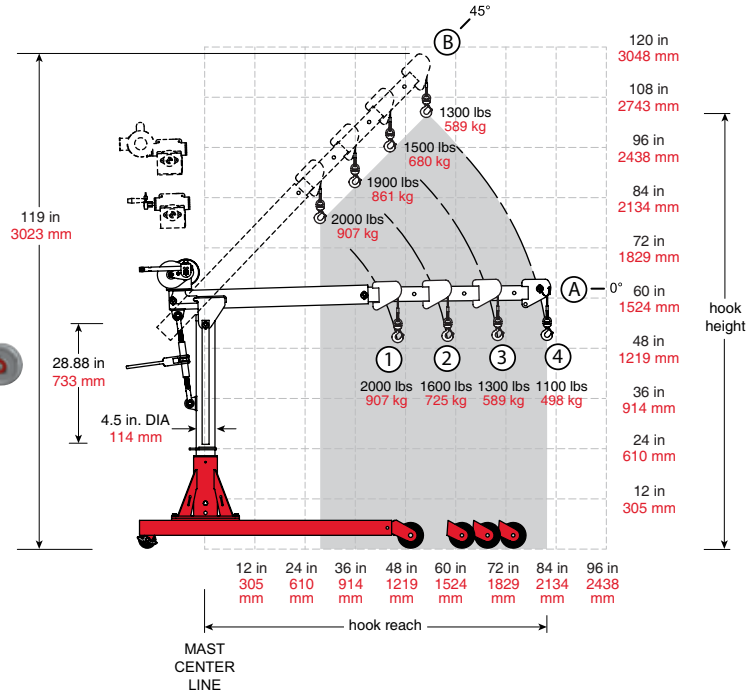
# PERFORMANCE

## Commander 2000 on Wheel Base

# COMMANDER 2000

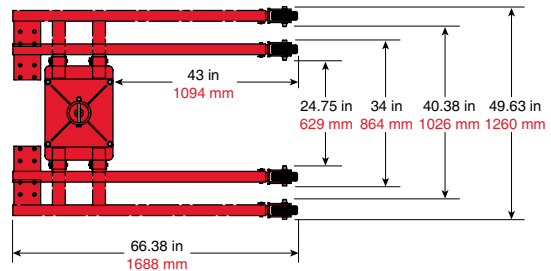


**IMPORTANT:**  
Crane DOES NOT rotate when assembled in 5BR10 wheel base.



## Commander 2000 Wheel Base Reach & Height Above Floor

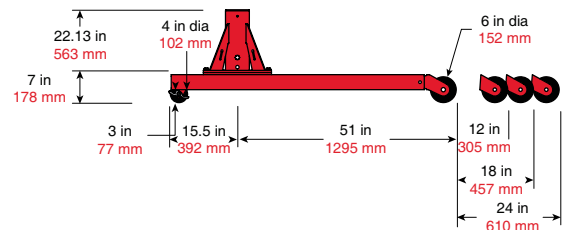
Boom Position	Hook Reach		Hook Height	
	(in)	(mm)	(in)	(mm)
A-1	46	1168	50	1270
A-2	58	1473	50	1270
A-3	70	1778	50	1270
A-4	82	2082	50	1270
B-1	28	711	78	1981
B-2	36	914	87	2209
B-3	45	1143	95	2413
B-4	53	1346	104	2641



## Commander 2000 Wheel Base Load Ratings

Boom Position	Leg Pos 1		Leg Pos 2		Leg Pos 3		Leg Pos 4									
	(lb)	(kg)	(lb)	(kg)	(lb)	(kg)	(lb)	(kg)								
A/B-1	<b>SEE LOAD RATINGS ON CRANE</b>															
A/B-2									DO NOT USE		DO NOT USE		DO NOT USE		DO NOT USE	
A/B-3									DO NOT USE		DO NOT USE		DO NOT USE		DO NOT USE	
A/B-4									DO NOT USE		DO NOT USE		DO NOT USE		DO NOT USE	

Dimensions are for reference only and subject to change without notice.



### IMPORTANT:

It is the owner or operator's responsibility to determine the suitability of the equipment to its intended use. Study all applicable codes, manuals and regulations. Be sure to read the Owner's Manual supplied with the equipment before operating it.

# ACCESSORIES AND OPTIONS

## Accessories for Commander Series

Item	Part Number	Description
Roller/Ball Bearing	5PT10BRG	Red electrostatic powder coat paint finish - Good
	5PT10BRG-G	Galvanized finish provides extra corrosion protection - Better
	5PT10BRG-S	304 Stainless steel electro-polished finish for added protection - Best
	5PT10BRG-S316	316 Stainless steel electro-polished finish for a higher level of protection - Premium
Base Anchor Kit	AN50A-5S	4 Hilti 304 Stainless Steel fasteners .500 X 5.50 SST304 KB-TZ
	AN50A-5S316	4 Hilti 316 Stainless Steel fasteners .500 X 5.50 SST316 KB-TZ
	AN62A-6	4 Hilti Steel fasteners .625 X 6.00 STL KB-TZ
	AN62A-6S	4 Hilti 304 Stainless Steel fasteners .625 X 6.00 SST304 KB-TZ
	AN62A-6S316	4 Hilti 316 Stainless Steel fasteners .625 X 6.00 SST316 KB-TZ
Drill-Drive Kit	ED300-DW11	120 VAC, 11.5 amp, 300rpm drill-motor to power drive the hand winch. Only available for cranes configured with the M2 winch option. Includes 1-1/8" hex drive socket.
Cable Spooler	RW50	316 stainless steel reel winds up wire rope when detached from crane.
Headache Ball	HB10-12-25	Red Painted 10lb fits 3/16" to 1/4" Rope
	HB10-25-38	Red Painted 10lb fits 1/4" to 3/8" Rope
	HB10S-12-25	Stainless Steel 10lb fits 3/16" to 1/4" Rope
	HB10S-25-38	Stainless Steel 10lb fits 1/4" to 3/8" Rope
Wire Rope Keeper	RK19-25S RK19-25S316	Stainless steel bracket attaches to base or other structure to hold free end of the wire rope when detached from the crane.



## Additional Options for Commander Series

Them offers a variety of additional options you can choose to enhance your davit crane.

### • FACTORY LOAD TEST

Upon request, Them can test your crane prior to shipping, up to 125% of rated load.

### • EXTENDED 5-YEAR WARRANTY

Extend our standard 2-year warranty to 5 years .

### • PE STAMP - PROFESSIONAL ENGINEER STAMP

Available upon request at time of order.

### • CE MARK

Available upon request at time of order, CE mark for products sold into the European union.

### • ATEX CLASSIFICATION

Specially rated for use in explosive settings. Available upon request at time of order.

### • POWER WINCH OPERATION

AC electric in any voltage. DC electric, hydraulic and pneumatic power winches available.

### • CUSTOM ELECTRIC CONTROLS

Them can build the high quality controls you need to operate your equipment.

### • DRILL-DRIVEABLE WINCH

A worm gear hand winch is also available for operation with a 400 rpm max drill motor option.

### • LIMIT SWITCH

Add an emergency safety shut-off to ensure safe operation.



## Customization

Customization is available for almost all Them products and should always be performed by our engineers to assure the changes meet our stringent quality standards. Below are some of our more common customization requests. Only factory modifications are covered under warranty.



### • LONGER LIFT DISTANCES

Customized winch and crane configurations to accommodate longer lifts.

### • CUSTOM COLORS & FINISHES

Custom colors and finishes are available to match your unique application

### • EXTENDED BOOM AND MASTS

Them can extend mast heights and boom lengths to fit your needs

### • RELOCATE THE WINCH

The winch can be relocated to fit confined spaces or height restrictions

### • SPECIAL BASES

Custom bases or mounting requirements can be manufactured to meet your unique situation

**Thern, Incorporated**  
Corporate Headquarters  
5712 Industrial Park Road  
Winona, MN USA  
1-800-843-7648  
Phone: 1-507-454-2996  
[www.thern.com](http://www.thern.com)

**Thern Europe**  
Windmolen 22  
7609 NN Almelo  
Netherlands  
Phone: +31-548-659-052  
[europe@thern.eu](mailto:europe@thern.eu)

