



Home of the Tiger hoisting range & Tiger subsea lifting products

Tiger Winches

Tiger Industrial Winch SF-2200

- 2200lb/1000kg capacity
- Ratchet handle permits reciprocating handle movement in both directions for lifting and lowering loads
- Positive load-actuated brake can hold the load in any position
- Gears and brake are fully covered to prevent dust, dirt and rain contamination
- Very low operator effort is required for easy operation
- Ratchet handle accommodates installation in cramped locations such as wall and floor



Certification:

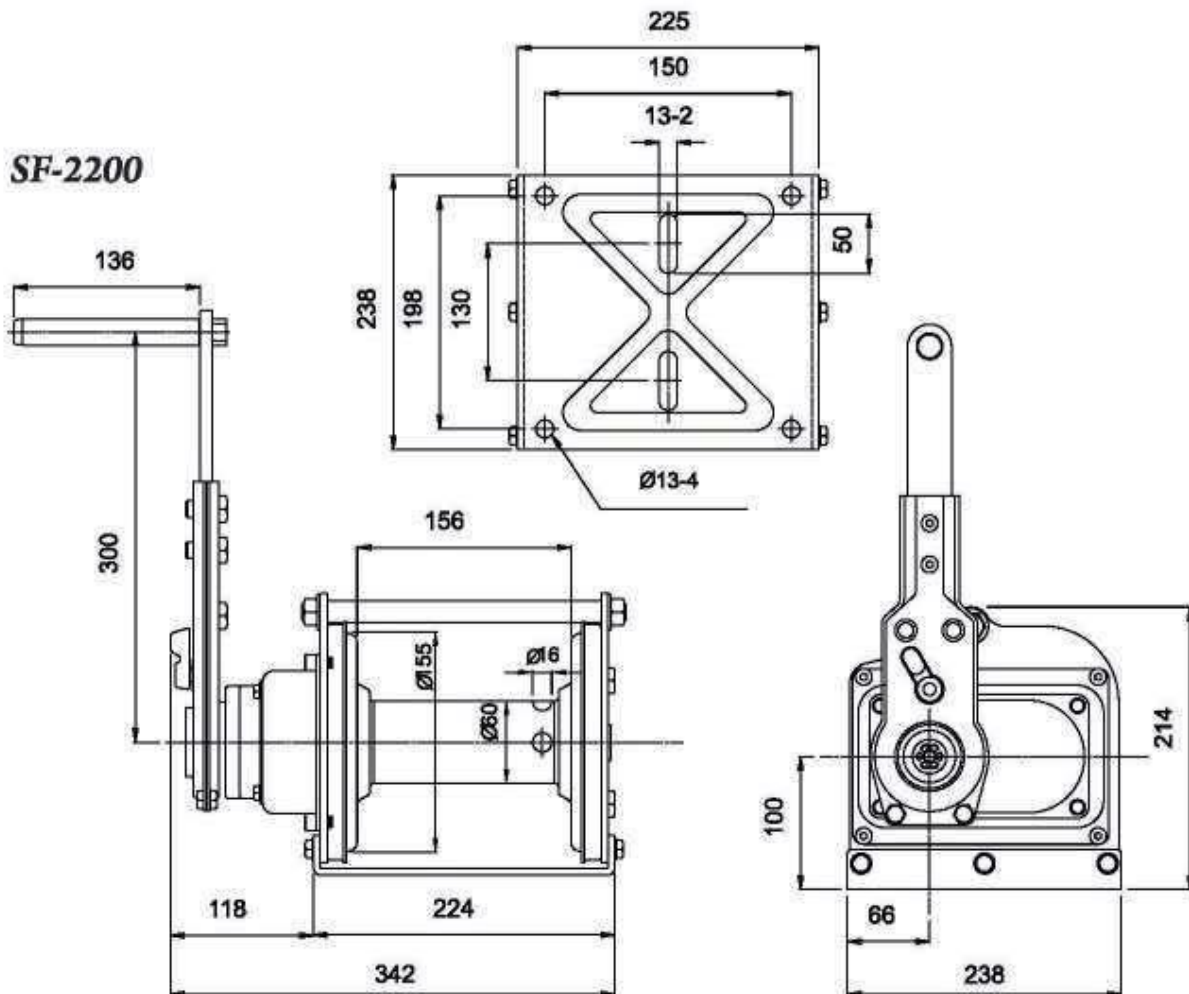
Each unit comes fully certified with a test certificate or an EC Declaration of Conformity stating compliance with the essential health and safety requirements of the Machinery Directive 2006/42/EC.

Technical Data

Product Code	Capacity (lbs/kg)	Hand Force Required (kg)	Gear Ratio	Hub Diameter (mm)	Handle Length (mm)	Unit Weight (kg)	Cable Diameter (mm/ inch)	Cable Storage Cap. (m)
SF-2200	2200/1000	10	22.2:1	ø80	300	1.6	ø8.0/ ø5/16	25



Home of the Tiger hoisting range & Tiger subsea lifting products
Technical Drawing



Due to our policy of continual product development, dimensions, weights and specifications may change without prior notice. Please check with your Tiger sales team when ordering.

Available from **DALE**
Lifting and Handling Specialists
2 Kelbrook Road
Manchester
M11 2QA

Telephone 0161 223 1990
Facsimile 0161 223 6767
Email sales@dale-lifting.co.uk
Website www.dlhonline.co.uk